

**MSCI**  
ESG RATINGS



CCC B BB BBB A AA AAA  
Certain information © 2022 MSCI Research LLC. Reproduced by permission.



**Factsheet date**

24 July 2024

**Launch date**

30 September 2021

**Wrappers**

GIA, ISA, SIPP, Offshore Bond†

**Min or Max Investment**

None

**Realignment frequency**

Every 3 months\*

**Trading currency**

GBP

**Initial Charge**

Nil

**Management Fee**

0.25% p.a.

**OCF of underlying funds**

0.2% p.a.

**Transaction Cost of underlying funds**

0.05% p.a.

**Gross Income Yield**

3.19% p.a.

**Risk Profile**

Cautious - Blended

**Expected Minimum Investment Term**

5+ years

**Management Team**



**Joanne Benson**  
Head of Investments



**Pete Wasko**  
Senior Portfolio Manager

## Description

The **objective** of Copia select: blended model portfolios is to provide broadly diversified efficient portfolios comprised of active and indexed investments that maximise returns over the long term for different levels risk relative to global equities.

The **strategy** uses a strategic asset allocation model derived from long run risk return characteristics of major asset classes with a tactical asset allocation overlay driven by the Copia Risk Barometer using a combination of both active and indexed investments.

This **approach** is for clients with a long-term investment horizon where there is need for a portfolio diversified across multiple asset classes and geographies. The portfolio risk-return characteristics assume a minimum investment term of 5 years or longer. To invest for a shorter period, advice should be sought to understand the potential impact.

## Top 10 Holdings\*\*

Name	Weighting %
Legal & General Sh Dated GBP Corp Bond Index C Acc	14.0
Vanguard U.S. Government Bond Ix Inst+GBP Hgd Acc	13.0
Fidelity Index UK Gilt Fund S Accumulation Shares	13.0
Royal London Short Duration Credit Fund M GBP Acc	12.0
Fidelity Index UK P Acc	7.5
Muzinich GI Short Dur Invest Grade Hdg GBP H Acc	6.0
Legal & General Global Real Est Dividend Idx C Acc	5.0
Legal & General Emer Mkts Govt Bd USD Idx C Acc	5.0
Fidelity Index US P Acc	4.5
WS Gresham House UK Multi Cap Inc C Sterling Acc	4.5

## Asset Allocation breakdown:



- Alternatives - Property: 5.00%
- Bonds - EM: 5.00%
- Bonds - Global: 18.00%
- Bonds - UK Corporate: 14.00%
- Bonds - UK Government: 13.00%
- Bonds - US Government: 13.00%
- Cash & Equivalents: 2.00%
- Equities - EM: 3.00%
- Equities - Europe: 4.00%
- Equities - Japan: 4.00%
- Equities - North America: 7.00%
- Equities - UK: 12.00%

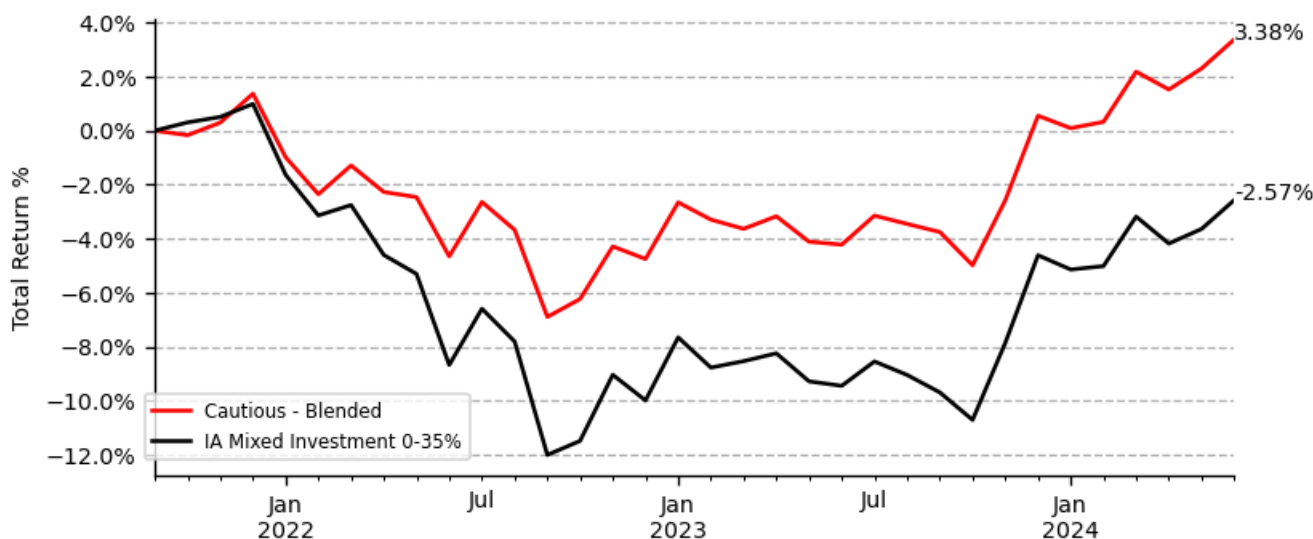
**Performance as of 30 June 2024**

	1 Month Return%	3 Month Return%	6 Month Return%	12 Month Return%	24 Month Return%	36 Month Return%	Since Inception%	Ann. Vol.%
<b>Cautious - Blended</b>	1.05	1.17	2.81	7.93	8.42	N.A	3.38	5.03
<b>IA Mixed Investment 0-35%</b>	1.11	0.63	2.14	7.59	6.68	N.A	-2.57	6.18

Returns based on Total return, assuming income is re-invested immediately and realigned on due dates.



**Total return since inception:**



**Risk:**

The model portfolio is managed by Copia Capital Management, the investment manager, to fulfil the model’s investment strategy and objectives. The investment manager may make changes to the investments held without notice. Clients are agreeing to the investment model as recommended by an Adviser and may not be investing into the specific assets included in this report. The portfolio report includes the assets held at the date published. The portfolio report will be updated and made available as soon as is practicable following a change made by the investment manager. The value of investments can fall as well as rise and are not guaranteed. Clients may get back less than originally invested. Consideration should be given to whether it is felt that the outcome of any risk assessment is accurate and advice should be sought for factors such as investment objectives, the investment term, attitude to risk, capacity for investment loss and the level of inflation.

Past performance takes into account the charges and expenses of the underlying ETFs and Funds. Other charges, such as Copia’s Management Charge, platform and Adviser charges will have the effect of reducing investment performance. This illustrative document is intended for clients where advice has been given by Advisers. Figures quoted relate to the past and past performance is not a reliable indicator of future performance. Models are prepared in accordance with tolerance to risk and not client circumstances. Copia only exercises discretion in terms of the model portfolio’s composition and its rebalancing so that it continues to meet its overall generic strategy and objectives; the model is not referable to any specific client. Information from given sources is taken to be reliable and accurate, which Copia cannot warrant for accuracy or completeness.

Although Copia Capital Management’s information providers, including without limitation, MSCI ESG Research LLC and its affiliates (“the ESG Parties”), obtain information (the “information”) from sources they consider to be reliable, none of the ESG parties warrants or guarantees the originality, accuracy and/or completeness of any data herein and expressly disclaim all express or implied warranties, including those of merchantability and fitness for a particular purpose.

The information may only be used for your internal use and may not be reproduced or disseminated in any form and may not be used as a basis, or a component of, any financial instruments or products or indices. Further none of the information can in and of itself can be used to determine which securities to buy or sell or when to buy or sell them. None of the ESG Parties shall have any liability for any errors or omissions in connection with any data herein, or any liability for any direct, indirect, special punitive, consequential or any other damages (including loss or profits) even if notified of the possibility of such damages.

FE fundinfo (UK) Limited have supplied IA instrument Performance data to Novia Financial PLC t/a Copia Capital subject to terms and conditions. Therefore, only the agreed performance data may only be distributed, and only in a non-downloadable format via factsheets and client reports. FE fundinfo (UK) Limited will not be liable for any losses suffered by any parties, arising from improper or proper use of this performance data.

\*Realignments may take place as per manager discretion.

\*\*Best value fund share class available to Copia to be used.

† Asset Allocation in the offshore bond wrapper may be significantly different to that of other wrappers as certain securities may not be available for investment.

**For Adviser Use Only. © Copia Capital Management - a division of Novia Financial plc. All Rights Reserved**