

## Asset class overview: performance table

	%mm Performance												Return Characteristics								Risk Characteristics				
	Sep-20	Oct-20	Nov-20	Dec-20	Jan-21	Feb-21	Mar-21	Apr-21	May-21	Jun-21	Jul-21	Aug-21	3M	6M	12M	36M	2017	2018	2019	2020	YTD	Annualised Volatility 1Y	Annualised Volatility 3Y	Maximum Return Drawdown* 1Y	Maximum Return Drawdown* 3Y
Equities - UK	-2.0%	-4.1%	14.4%	2.9%	-0.4%	2.1%	3.7%	3.4%	1.7%	-0.1%	0.4%	2.6%	2.9%	12.3%	26.1%	10.4%	13.1%	-9.2%	19.1%	-9.4%	14.1%	15.7%	16.9%	-7.5%	-35.8%
Equities - Europe Ex UK	-0.1%	-6.5%	14.7%	2.1%	-2.1%	-0.1%	4.4%	3.8%	1.9%	1.5%	1.4%	3.2%	6.2%	17.3%	25.5%	32.7%	16.0%	-9.5%	21.0%	8.2%	14.8%	17.2%	16.0%	-10.4%	-30.9%
Equities - US	-1.1%	-2.1%	7.4%	0.9%	0.4%	0.3%	4.8%	4.7%	-1.4%	4.6%	1.5%	4.9%	11.3%	20.3%	27.1%	54.1%	10.5%	0.2%	26.3%	13.8%	21.2%	10.7%	15.2%	-6.7%	-26.4%
Equities - Global	-0.5%	-2.8%	9.3%	1.5%	-0.2%	0.2%	3.9%	4.1%	-0.7%	3.8%	1.0%	4.2%	9.2%	17.3%	26.1%	44.0%	11.8%	-3.5%	23.2%	12.4%	17.4%	11.2%	14.9%	-6.5%	-26.2%
Equities - Japan	4.7%	-1.6%	8.6%	1.9%	-0.7%	-0.7%	1.9%	-2.1%	-0.1%	1.7%	-2.3%	4.3%	3.6%	3.2%	16.0%	17.7%	13.5%	-7.5%	13.9%	12.6%	1.7%	11.3%	13.7%	-10.8%	-24.6%
Equities - Asia ex-Japan	-2.4%	-0.7%	11.3%	2.8%	0.1%	1.6%	1.7%	3.3%	0.9%	-0.6%	-1.7%	1.9%	-0.5%	5.5%	18.9%	17.7%	14.5%	-5.1%	13.9%	3.4%	7.3%	12.3%	17.5%	-5.0%	-33.3%
Equities - EM	-0.2%	2.1%	6.5%	4.3%	3.1%	-1.2%	-0.8%	1.8%	-1.3%	3.9%	-7.1%	3.2%	-0.4%	-0.8%	14.4%	24.3%	24.8%	-9.6%	13.9%	14.3%	1.1%	12.4%	15.9%	-13.3%	-25.2%
Alternatives - Property	-0.2%	-4.2%	11.4%	0.0%	-0.7%	3.1%	3.9%	4.0%	0.0%	4.0%	2.3%	2.8%	9.4%	18.1%	28.6%	18.0%	1.6%	0.0%	17.7%	-11.7%	20.8%	13.2%	17.7%	-8.1%	-35.2%
Alternatives - Private Equity	-0.2%	-4.9%	16.7%	3.4%	-0.8%	4.4%	6.8%	9.1%	0.1%	3.1%	5.1%	3.1%	11.8%	30.4%	54.7%	62.5%	13.8%	-8.9%	39.3%	1.2%	35.0%	19.0%	23.9%	-8.3%	-44.5%
Alternatives - Infrastructure	3.7%	-1.3%	3.4%	-0.8%	-1.6%	-1.8%	3.2%	2.2%	0.2%	1.6%	0.6%	0.8%	3.0%	8.8%	10.5%	22.2%	3.0%	1.5%	14.6%	3.8%	5.2%	6.9%	10.3%	-6.5%	-15.7%
Alternatives - Commodities	0.5%	0.6%	1.5%	2.6%	2.7%	4.1%	-1.5%	7.6%	1.7%	3.0%	3.3%	1.0%	7.5%	15.9%	30.5%	21.3%	-6.2%	-3.2%	4.0%	-0.9%	24.0%	7.9%	10.5%	-4.0%	-20.3%
Alternatives - Gold	-0.3%	-1.2%	-8.2%	4.0%	-2.4%	-8.6%	0.0%	3.4%	4.4%	-4.4%	2.5%	0.2%	-1.7%	6.1%	-11.1%	41.0%	1.6%	4.3%	14.6%	20.0%	-5.4%	15.2%	13.7%	-20.3%	-22.3%
Bonds - UK Government	2.4%	-0.5%	-0.7%	1.2%	-1.6%	-5.8%	0.3%	0.3%	0.1%	1.1%	2.7%	-0.1%	3.8%	4.5%	-0.7%	12.4%	1.8%	0.3%	6.6%	8.4%	-3.1%	7.6%	7.1%	-8.3%	-11.4%
Bonds - UK Corporate	1.1%	0.2%	1.3%	1.4%	-0.9%	-3.2%	0.0%	0.6%	0.1%	1.0%	1.4%	0.2%	2.6%	3.2%	3.0%	15.9%	4.3%	-1.6%	9.3%	7.9%	-1.0%	4.5%	6.3%	-4.8%	-11.4%
Bonds - Global Corporate	-0.6%	-0.2%	3.2%	1.2%	-1.2%	-2.1%	-0.9%	1.1%	1.2%	0.1%	1.2%	-0.4%	0.8%	2.2%	2.4%	19.8%	8.8%	-3.9%	11.6%	10.0%	-1.1%	4.9%	6.8%	-4.7%	-14.9%
Bonds - Global Government	3.2%	-0.3%	-1.8%	-1.1%	-1.7%	-4.3%	-0.6%	0.7%	-2.0%	1.9%	1.2%	0.3%	3.5%	1.6%	-4.5%	6.1%	-3.4%	5.2%	2.5%	5.7%	-4.4%	6.9%	8.2%	-12.3%	-16.1%
Bonds - EM	1.2%	-0.5%	1.1%	0.0%	-2.1%	-5.0%	0.7%	1.9%	-1.4%	3.5%	-0.4%	2.1%	5.2%	6.5%	0.9%	15.7%	0.1%	0.0%	12.3%	1.9%	-0.9%	7.7%	11.2%	-10.5%	-21.0%
GBPUSD	-3.0%	0.0%	3.3%	2.4%	0.5%	1.8%	-1.3%	0.4%	2.7%	-2.8%	0.6%	-1.0%	-3.2%	-1.6%	3.2%	5.9%	9.5%	-5.9%	4.0%	3.2%	0.7%	7.1%	8.1%	-5.5%	-13.9%
GBPEUR	-1.6%	0.7%	0.5%	0.1%	1.2%	1.9%	1.9%	-2.0%	1.1%	0.2%	0.7%	-0.6%	0.3%	1.2%	4.1%	4.4%	-3.8%	-1.1%	5.9%	-5.3%	4.4%	4.3%	5.5%	-3.9%	-11.3%
GBPJPY	-2.8%	-0.9%	3.0%	1.4%	1.9%	3.6%	2.4%	-0.7%	2.8%	-1.4%	-0.5%	-0.9%	-2.8%	1.5%	7.7%	4.9%	5.7%	-8.3%	3.0%	-2.0%	7.1%	7.2%	9.0%	-6.3%	-14.8%
Dollar Index	1.6%	0.3%	-2.2%	-2.1%	0.6%	0.4%	2.5%	-2.1%	-1.6%	2.8%	-0.3%	0.6%	3.2%	1.9%	0.4%	-2.6%	-9.8%	4.1%	0.4%	-6.8%	3.0%	6.1%	5.3%	-5.5%	-13.2%

### Notes:

Returns based on Total return, assuming income is re-invested immediately and rebalanced on due dates.

The performance of each asset class is represented by relevant indices and expressed in GBP terms, which are selected by Copia Capital Management. Reference to a particular asset class does not represent a recommendation to seek exposure to that asset class. \*Maximum Return Drawdown is defined as the largest single drop from peak to trough of the value of an asset class or portfolio over any timeframe within the stated period. This information is included for comparison purposes for the period stated, but is not an indicator of potential maximum loss for other periods or in the future.

## Copia Volatility Focus range

	%mm Performance												Return Characteristics									Risk Characteristics				
	Sep-20	Oct-20	Nov-20	Dec-20	Jan-21	Feb-21	Mar-21	Apr-21	May-21	Jun-21	Jul-21	Aug-21	3M	6M	12M	36M	2017	2018	2019	2020	YTD	Since Inception (28 Oct 13)	Annualised Volatility 1Y	Annualised Volatility 3Y	Maximum Return Drawdown* 1Y	Maximum Return Drawdown* 3Y
1	0.4%	-0.2%	-0.2%	0.4%	-0.1%	-0.6%	0.1%	0.1%	0.1%	0.1%	0.1%	-0.1%	0.1%	0.3%	0.1%	3.4%	0.6%	-0.3%	3.0%	1.0%	-0.4%	10.5%	0.9%	2.3%	-0.9%	-7.8%
2	0.5%	-0.2%	-0.3%	0.4%	-0.2%	-0.8%	0.0%	0.2%	0.1%	0.1%	0.4%	0.0%	0.4%	0.7%	0.1%	3.6%	0.7%	-0.1%	3.3%	0.8%	-0.3%	10.3%	1.2%	2.7%	-1.5%	-9.2%
3	0.2%	-1.0%	-0.5%	0.9%	-0.4%	-1.2%	0.3%	0.5%	-0.1%	0.4%	0.9%	0.4%	1.7%	2.3%	0.4%	3.4%	3.4%	-2.5%	5.7%	-0.9%	0.7%	17.2%	2.4%	4.7%	-3.1%	-14.0%
4	0.6%	-1.1%	0.2%	1.3%	-0.4%	-1.4%	0.1%	1.0%	-0.3%	0.7%	1.0%	0.8%	2.6%	3.4%	2.5%	3.2%	4.0%	-3.5%	6.3%	-0.7%	1.5%	22.2%	3.0%	5.6%	-3.8%	-15.9%
5	0.6%	-1.2%	0.3%	1.8%	-1.0%	-1.9%	0.6%	1.6%	-0.6%	1.2%	0.5%	1.4%	3.2%	4.9%	3.3%	1.8%	6.4%	-4.7%	8.0%	-2.0%	1.9%	23.4%	4.1%	7.7%	-5.2%	-19.7%
6	0.9%	-1.8%	1.1%	1.8%	-0.9%	-1.9%	1.1%	1.8%	-0.6%	1.3%	0.5%	1.9%	3.8%	6.2%	5.3%	2.5%	7.2%	-5.0%	9.2%	-2.8%	3.2%	25.9%	4.8%	8.4%	-5.7%	-21.2%
7	0.7%	-2.3%	1.7%	2.2%	-0.8%	-1.5%	1.5%	2.4%	-0.7%	1.6%	0.6%	2.4%	4.7%	8.0%	7.9%	4.6%	8.2%	-5.0%	10.1%	-3.2%	5.5%	32.4%	5.6%	9.1%	-6.2%	-21.4%
8	0.9%	-3.0%	2.3%	2.6%	-0.8%	-1.3%	1.8%	2.6%	-0.8%	1.9%	0.6%	2.8%	5.3%	9.1%	9.7%	7.3%	8.7%	-5.4%	10.4%	-1.2%	6.8%	37.9%	6.5%	9.5%	-6.9%	-20.3%
9	1.2%	-3.4%	3.9%	2.7%	-0.6%	-1.0%	2.0%	3.0%	-1.0%	2.2%	0.0%	3.0%	5.2%	9.4%	12.4%	6.9%	9.3%	-7.0%	12.0%	-2.2%	7.7%	40.5%	7.6%	11.2%	-7.1%	-24.3%
10	0.8%	-3.4%	3.0%	2.9%	-0.8%	-1.1%	1.9%	2.8%	-1.1%	2.2%	0.0%	3.0%	5.3%	9.1%	10.5%	8.2%	9.6%	-7.3%	12.7%	-0.5%	7.1%	42.1%	7.3%	11.0%	-7.2%	-22.8%

Source: Copia Capital Management

## Copia Enhanced Equity portfolio

	%mm Performance												Return Characteristics									Risk Characteristics				
	Sep-20	Oct-20	Nov-20	Dec-20	Jan-21	Feb-21	Mar-21	Apr-21	May-21	Jun-21	Jul-21	Aug-21	3M	6M	12M	36M	2017	2018	2019	2020	YTD	Since Inception (14 Mar 16)	Annualised Volatility 1Y	Annualised Volatility 3Y	Maximum Return Drawdown* 1Y	Maximum Return Drawdown* 3Y
Copia Enhanced Equity	1.0%	-2.8%	7.3%	1.9%	0.2%	1.1%	4.4%	3.7%	-1.0%	2.0%	1.6%	2.8%	6.6%	14.3%	24.4%	21.3%	15.4%	-7.9%	12.9%	3.0%	15.8%	72.6%	9.0%	12.8%	-6.1%	-26.7%

## Copia Select range

	%mm Performance												Return Characteristics										Risk Characteristics			
	Sep-20	Oct-20	Nov-20	Dec-20	Jan-21	Feb-21	Mar-21	Apr-21	May-21	Jun-21	Jul-21	Aug-21	3M	6M	12M	36M	2017	2018	2019	2020	YTD	Since Inception (31 Oct 16)	Annualised Volatility 1Y	Annualised Volatility 3Y	Maximum Return Drawdown* 1Y	Maximum Return Drawdown* 3Y
Cautious	0.7%	-0.9%	2.4%	1.0%	-0.8%	-2.6%	1.0%	1.4%	-0.2%	1.2%	0.7%	1.0%	3.0%	5.2%	4.9%	15.9%	3.0%	-0.5%	9.3%	6.2%	1.6%	20.4%	4.6%	5.3%	-4.1%	-9.8%
Moderate	0.6%	-1.2%	4.3%	1.3%	-0.3%	-1.5%	1.6%	2.1%	-0.5%	1.9%	-0.2%	1.9%	3.7%	7.0%	10.4%	21.6%	6.0%	-1.7%	13.3%	6.9%	5.1%	33.3%	5.8%	7.2%	-3.4%	-13.5%
Balanced	0.1%	-1.3%	6.2%	1.8%	-0.1%	-0.7%	2.3%	2.8%	-0.4%	2.0%	-0.3%	2.5%	4.3%	9.3%	15.7%	25.2%	8.9%	-4.0%	16.1%	7.0%	8.4%	42.8%	7.3%	10.0%	-3.6%	-19.8%
Growth	-0.2%	-1.6%	7.4%	1.9%	0.0%	0.0%	2.8%	3.2%	-0.4%	2.5%	-0.4%	2.9%	5.1%	11.0%	19.3%	28.2%	10.1%	-4.3%	17.6%	6.5%	11.0%	49.1%	8.5%	11.6%	-4.2%	-23.2%
Equity	-0.3%	-1.8%	8.2%	2.1%	0.3%	0.3%	3.1%	3.5%	-0.6%	2.9%	-0.5%	3.5%	5.8%	12.3%	22.1%	30.0%	12.1%	-5.2%	18.1%	7.2%	12.9%	55.1%	9.5%	12.7%	-4.8%	-24.3%

Source: Copia Capital Management

## Copia Select ESG range

	%mm Performance												Return Characteristics										Risk Characteristics			
	Sep-20	Oct-20	Nov-20	Dec-20	Jan-21	Feb-21	Mar-21	Apr-21	May-21	Jun-21	Jul-21	Aug-21	3M	6M	12M	36M	2017	2018	2019	2020	YTD	Since Inception (31 Mar 20)	Annualised Volatility 1Y	Annualised Volatility 3Y	Maximum Return Drawdown* 1Y	Maximum Return Drawdown* 3Y
Cautious	1.0%	-1.1%	2.1%	0.9%	-1.2%	-3.1%	1.2%	1.4%	-0.3%	1.3%	1.0%	1.1%	3.4%	5.8%	4.3%	#N/A	#N/A	#N/A	#N/A	#N/A	1.3%	10.5%	5.2%	#N/A	-4.8%	#N/A
Moderate	1.2%	-1.6%	4.2%	1.2%	-0.7%	-2.5%	2.1%	2.0%	-0.4%	2.3%	0.2%	2.0%	4.5%	8.4%	10.2%	#N/A	#N/A	#N/A	#N/A	#N/A	5.0%	20.9%	6.6%	#N/A	-4.9%	#N/A
Balanced	0.8%	-2.0%	6.1%	1.7%	-0.7%	-2.0%	2.9%	2.5%	-0.3%	2.4%	0.2%	2.5%	5.2%	10.6%	14.8%	#N/A	#N/A	#N/A	#N/A	#N/A	7.7%	31.7%	8.1%	#N/A	-5.5%	#N/A
Growth	0.6%	-2.3%	7.4%	1.9%	-0.6%	-1.5%	3.4%	2.8%	-0.3%	2.9%	0.2%	2.9%	6.2%	12.5%	18.6%	#N/A	#N/A	#N/A	#N/A	#N/A	10.1%	38.7%	9.2%	#N/A	-5.6%	#N/A
Equity	0.8%	-2.7%	8.3%	2.2%	-0.4%	-1.5%	3.9%	3.0%	-0.5%	3.4%	0.1%	3.4%	7.0%	14.0%	21.5%	#N/A	#N/A	#N/A	#N/A	#N/A	11.9%	43.5%	10.3%	#N/A	-6.4%	#N/A

Source: Copia Capital Management

## Copia Select USD range

	%mm Performance												Return Characteristics										Risk Characteristics			
	Sep-20	Oct-20	Nov-20	Dec-20	Jan-21	Feb-21	Mar-21	Apr-21	May-21	Jun-21	Jul-21	Aug-21	3M	6M	12M	36M	2017	2018	2019	2020	YTD	Since Inception (31 Jan 17)	Annualised Volatility 1Y	Annualised Volatility 3Y	Maximum Return Drawdown* 1Y	Maximum Return Drawdown* 3Y
Cautious	-0.9%	-1.0%	3.9%	1.7%	-0.7%	-1.2%	0.3%	1.7%	1.1%	0.1%	1.0%	0.4%	1.5%	4.7%	6.5%	23.5%	#N/A	-2.3%	12.7%	9.2%	2.7%	33.4%	5.1%	5.4%	-2.7%	-13.4%
Moderate	-1.5%	-1.4%	6.1%	3.0%	-0.5%	-0.5%	0.7%	2.5%	1.9%	-0.5%	0.9%	0.6%	1.0%	6.1%	11.5%	28.4%	#N/A	-4.9%	16.3%	10.4%	5.1%	43.1%	7.5%	8.3%	-3.6%	-18.6%
Balanced	-2.1%	-1.6%	7.6%	3.6%	-0.2%	0.6%	1.2%	2.9%	2.0%	-0.5%	0.9%	1.0%	1.4%	7.8%	16.2%	32.5%	#N/A	-6.7%	20.0%	10.2%	8.2%	53.1%	9.0%	11.5%	-4.3%	-26.0%
Growth	-2.4%	-2.0%	8.3%	4.1%	-0.2%	0.9%	1.6%	3.4%	2.4%	-0.7%	1.0%	1.3%	1.6%	9.3%	18.8%	34.9%	#N/A	-7.4%	20.8%	10.6%	10.1%	58.9%	10.1%	12.9%	-4.8%	-28.3%
Equity	-2.7%	-2.4%	10.1%	4.5%	-0.1%	1.8%	2.0%	3.7%	2.4%	-0.4%	1.1%	1.7%	2.4%	10.9%	23.2%	38.4%	#N/A	-8.6%	22.7%	11.2%	12.7%	67.3%	11.8%	14.9%	-5.6%	-31.6%

Source: Copia Capital Management

## Copia Select EUR range

	%mm Performance												Return Characteristics										Risk Characteristics			
	Sep-20	Oct-20	Nov-20	Dec-20	Jan-21	Feb-21	Mar-21	Apr-21	May-21	Jun-21	Jul-21	Aug-21	3M	6M	12M	36M	2017	2018	2019	2020	YTD	Since Inception (31 Jan 17)	Annualised Volatility 1Y	Annualised Volatility 3Y	Maximum Return Drawdown* 1Y	Maximum Return Drawdown* 3Y
Cautious	-0.1%	0.0%	2.0%	0.2%	0.1%	-0.5%	2.1%	0.0%	-0.1%	1.6%	1.1%	0.7%	3.4%	5.5%	7.3%	18.0%	#N/A	-0.8%	11.7%	2.4%	5.1%	22.3%	3.1%	5.4%	-1.7%	-13.7%
Moderate	-0.7%	-0.6%	4.0%	1.0%	0.4%	0.0%	3.2%	0.6%	0.4%	2.1%	0.9%	1.2%	4.3%	8.7%	13.3%	26.6%	#N/A	-2.5%	17.8%	3.0%	9.2%	35.1%	4.9%	8.2%	-2.6%	-20.4%
Balanced	-1.2%	-1.1%	5.8%	1.5%	0.6%	0.9%	4.0%	1.1%	0.5%	2.7%	1.2%	1.8%	5.8%	11.7%	19.0%	32.6%	#N/A	-3.8%	21.0%	3.1%	13.4%	45.3%	6.9%	10.8%	-3.5%	-25.7%
Growth	-1.5%	-1.5%	6.2%	2.0%	0.5%	1.2%	4.2%	1.3%	0.8%	2.5%	1.2%	1.9%	5.7%	12.5%	20.4%	35.2%	#N/A	-4.3%	23.2%	3.5%	14.4%	50.5%	7.4%	11.9%	-4.0%	-28.2%
Equity	-1.7%	-1.8%	7.7%	2.2%	0.7%	2.0%	4.6%	1.5%	0.6%	3.0%	0.9%	2.3%	6.4%	13.5%	24.0%	38.0%	#N/A	-5.4%	25.7%	3.3%	16.6%	56.2%	8.9%	13.6%	-4.7%	-31.4%

Source: Copia Capital Management

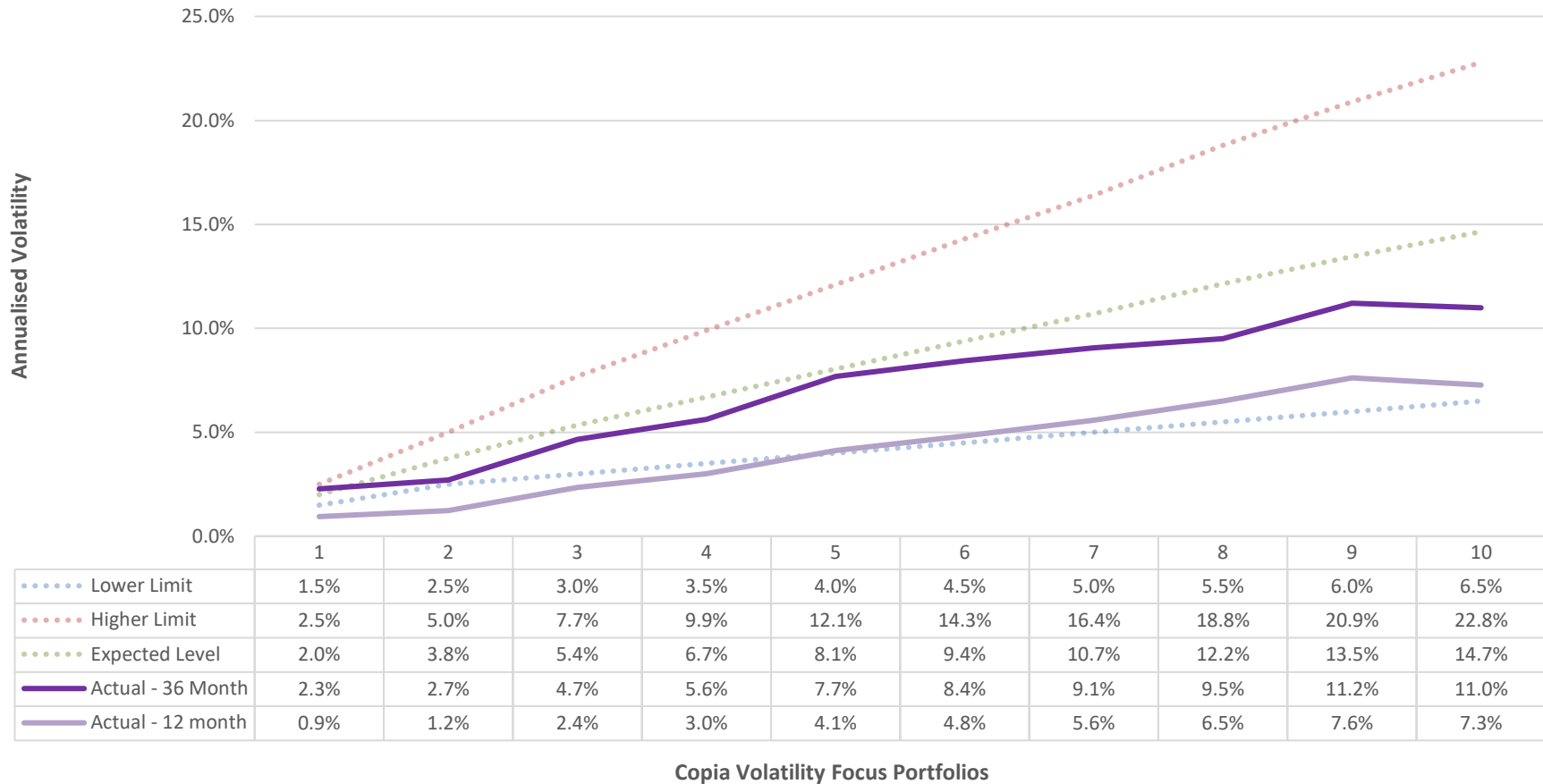
Notes: Returns based on Total return, assuming income is re-invested immediately and rebalanced on due dates.  
Copia Select USD and EUR models are available only on the Novia Global platform.

### Copia Retirement Income range

	%mm Performance												Return Characteristics										Risk Characteristics			
	Sep-20	Oct-20	Nov-20	Dec-20	Jan-21	Feb-21	Mar-21	Apr-21	May-21	Jun-21	Jul-21	Aug-21	3M	6M	12M	36M	2017	2018	2019	2020	YTD	Since Inception (28 Feb 17)	Annualised Volatility 1Y	Annualised Volatility 3Y	Maximum Return Drawdown* 1Y	Maximum Return Drawdown* 3Y
RP1/3-10Y	0.2%	-0.7%	1.4%	0.5%	-0.1%	-0.7%	0.8%	0.5%	0.0%	0.6%	0.0%	0.6%	1.2%	2.6%	3.2%	6.8%	#N/A	-0.9%	6.0%	0.5%	1.7%	8.4%	2.1%	2.7%	-1.5%	-5.6%
RP1/11-15Y	0.1%	-1.2%	3.1%	1.0%	-0.3%	-1.4%	1.3%	0.9%	-0.1%	1.0%	0.1%	0.9%	2.0%	4.2%	5.4%	8.2%	#N/A	-1.9%	8.5%	-0.1%	2.4%	10.6%	4.2%	4.4%	-2.7%	-9.9%
RP1/16-20Y	0.2%	-1.5%	4.0%	1.3%	-0.4%	-1.9%	1.6%	1.2%	-0.1%	1.2%	0.0%	1.2%	2.4%	5.2%	6.8%	9.8%	#N/A	-1.9%	9.9%	-0.2%	2.8%	13.2%	5.4%	5.6%	-3.4%	-12.6%
RP1/20-25Y+	0.2%	-1.5%	4.4%	1.5%	-0.4%	-2.3%	1.9%	1.5%	-0.3%	1.5%	-0.1%	1.5%	3.0%	6.2%	8.0%	12.3%	#N/A	-2.0%	11.1%	0.4%	3.3%	16.0%	6.2%	6.5%	-4.3%	-15.1%
RP2/3-10Y	0.0%	-1.3%	3.6%	0.8%	-0.1%	-0.8%	1.4%	0.9%	-0.1%	1.1%	0.0%	1.1%	2.2%	4.5%	6.8%	7.4%	#N/A	-2.4%	7.8%	-1.3%	3.6%	9.5%	4.4%	4.9%	-2.3%	-10.3%
RP2/11-15Y	-0.2%	-1.8%	5.5%	1.3%	-0.4%	-1.4%	1.8%	1.3%	-0.1%	1.3%	-0.1%	1.4%	2.7%	5.8%	8.9%	7.4%	#N/A	-3.3%	10.8%	-2.8%	3.9%	11.1%	6.6%	7.2%	-3.5%	-15.6%
RP2/16-20Y	-0.1%	-2.0%	6.1%	1.6%	-0.4%	-1.7%	2.1%	1.6%	-0.2%	1.7%	-0.1%	1.7%	3.3%	7.0%	10.5%	10.0%	#N/A	-3.1%	12.3%	-2.4%	4.8%	14.7%	7.4%	7.9%	-4.0%	-17.1%
RP2/20-25Y+	-0.1%	-1.9%	6.6%	1.7%	-0.4%	-2.2%	2.2%	1.7%	-0.3%	2.0%	-0.1%	1.9%	3.8%	7.6%	11.4%	12.3%	#N/A	-3.0%	13.2%	-1.7%	4.9%	17.3%	8.1%	9.0%	-4.6%	-20.1%
RP3/3-10Y	-0.3%	-1.7%	5.7%	1.1%	-0.1%	-1.0%	2.0%	1.4%	-0.1%	1.5%	0.0%	1.6%	3.2%	6.6%	10.3%	6.9%	#N/A	-3.6%	10.4%	-4.1%	5.4%	10.5%	6.6%	7.8%	-3.4%	-17.1%
RP3/11-15Y	-0.4%	-2.2%	7.0%	1.6%	-0.3%	-1.6%	2.5%	1.8%	-0.2%	1.9%	-0.2%	2.1%	3.9%	8.3%	12.6%	8.1%	#N/A	-4.1%	12.5%	-4.9%	6.2%	12.7%	8.4%	9.4%	-4.3%	-20.3%
RP3/16-20Y	-0.3%	-2.2%	7.4%	1.8%	-0.2%	-1.8%	2.7%	2.0%	-0.2%	2.2%	-0.2%	2.3%	4.3%	8.9%	13.7%	10.7%	#N/A	-4.0%	14.4%	-4.4%	6.7%	16.5%	8.9%	10.2%	-4.6%	-22.3%
RP3/20-25Y+	-0.4%	-2.0%	7.8%	1.8%	-0.3%	-2.2%	2.6%	2.1%	-0.3%	2.4%	-0.3%	2.3%	4.5%	9.1%	14.1%	11.5%	#N/A	-3.9%	14.8%	-3.9%	6.4%	17.7%	9.4%	11.2%	-5.1%	-25.0%
RP4/3-10Y	-0.6%	-2.5%	8.6%	1.7%	-0.1%	-1.3%	3.0%	2.1%	-0.2%	2.4%	-0.2%	2.5%	4.8%	10.1%	16.1%	7.9%	#N/A	-4.9%	14.0%	-7.1%	8.4%	13.6%	10.0%	11.5%	-5.1%	-25.1%
RP4/11-15Y	-0.8%	-2.7%	9.7%	1.9%	-0.2%	-1.6%	3.4%	2.4%	-0.3%	2.7%	-0.2%	2.8%	5.4%	11.3%	18.0%	9.0%	#N/A	-4.9%	15.2%	-7.9%	9.3%	15.3%	11.3%	12.8%	-5.6%	-27.4%
RP4/16-20Y	-0.7%	-2.4%	9.0%	2.1%	-0.1%	-1.8%	3.4%	2.5%	-0.3%	2.9%	-0.4%	2.9%	5.5%	11.4%	17.8%	10.4%	#N/A	-4.6%	15.2%	-6.8%	9.2%	17.1%	10.7%	12.5%	-5.5%	-27.2%
RP4/20-25Y+	-0.7%	-2.4%	9.3%	2.2%	-0.1%	-2.4%	3.0%	2.3%	-0.3%	3.0%	-0.7%	2.8%	5.1%	10.6%	16.8%	9.2%	#N/A	-4.5%	15.4%	-6.6%	7.8%	16.1%	11.2%	12.8%	-5.9%	-27.6%
RP5/3-10Y	-0.2%	-2.8%	9.4%	2.3%	-0.1%	-1.6%	4.2%	3.0%	-0.4%	3.5%	-0.3%	3.5%	6.8%	14.1%	21.9%	14.1%	#N/A	-4.2%	16.1%	-6.7%	12.3%	22.5%	11.5%	13.6%	-6.4%	-28.1%
RP5/11-15Y	-0.7%	-2.6%	9.9%	2.3%	0.0%	-1.7%	4.0%	2.9%	-0.4%	3.6%	-0.4%	3.5%	6.8%	14.0%	21.9%	12.3%	#N/A	-3.7%	15.2%	-7.7%	12.1%	20.6%	11.8%	13.9%	-6.6%	-28.4%
RP5/16-20Y	-0.7%	-2.6%	9.7%	2.4%	0.1%	-1.7%	4.1%	2.9%	-0.3%	3.6%	-0.5%	3.5%	6.6%	13.8%	21.7%	11.4%	#N/A	-4.0%	14.8%	-7.8%	11.9%	19.5%	11.7%	13.8%	-6.7%	-28.5%
RP5/20-25Y+	-0.8%	-2.7%	10.1%	2.5%	0.3%	-2.1%	3.8%	2.7%	-0.3%	3.8%	-0.9%	3.4%	6.4%	12.9%	20.9%	9.8%	#N/A	-4.6%	15.1%	-8.3%	11.0%	17.5%	12.2%	14.0%	-7.1%	-28.9%

Source: Copia Capital Management

## Outcome analysis as of 31 August 2021

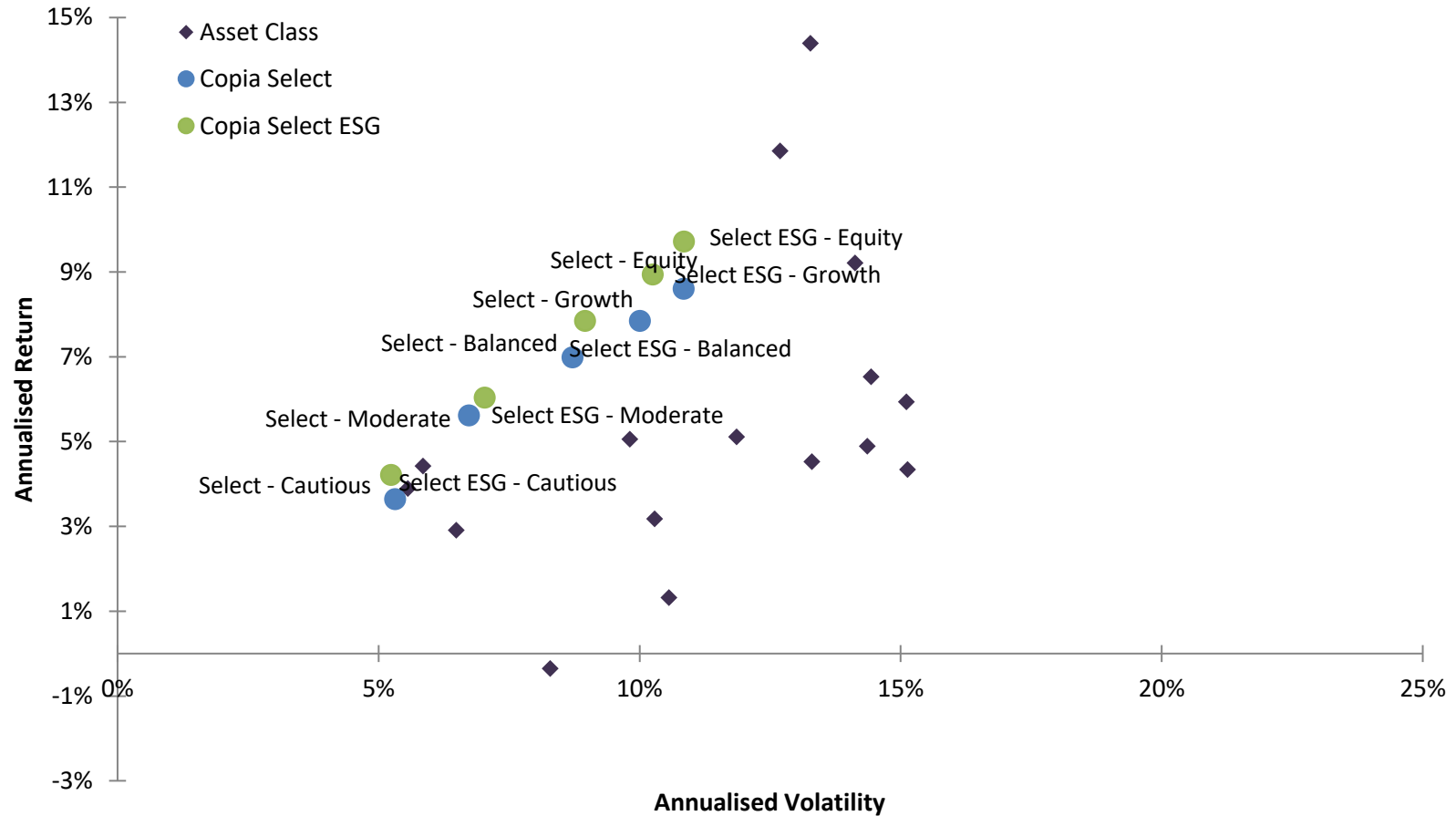


*For illustration only*

*Returns based on Total return, assuming income is re-invested immediately and rebalanced on due dates.*

# Select and Select ESG: outcome chart

Outcome (risk-return) analysis as of 31 August 2021



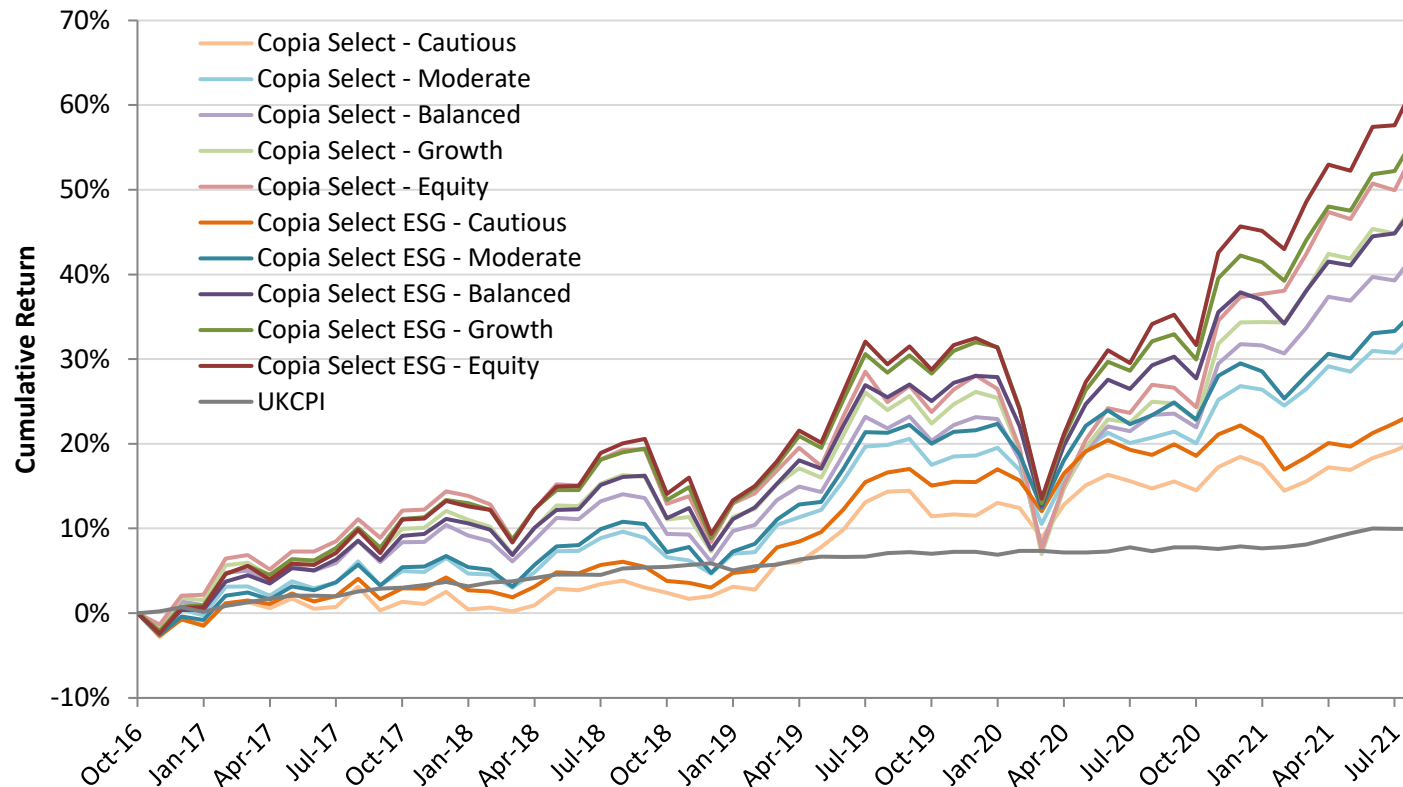
*For illustration only.*

*Returns based on Total return, assuming income is re-invested immediately and rebalanced on due dates.*

**The annualised risk and return figures are calculated based on the period from the inception date of the Select portfolios (31-Oct-2016) to 31-Aug-2021. The performance figures for Select ESG portfolios include simulated data before the inception date of the Select ESG portfolios (31-Mar-2020)**

Outcome (cumulative return) analysis as of 31 August 2021

## Copia Select and Select ESG Cumulative Performance Since 31-Oct-2016



*For illustration only.*

*Returns based on Total return, assuming income is re-invested immediately and rebalanced on due dates.*

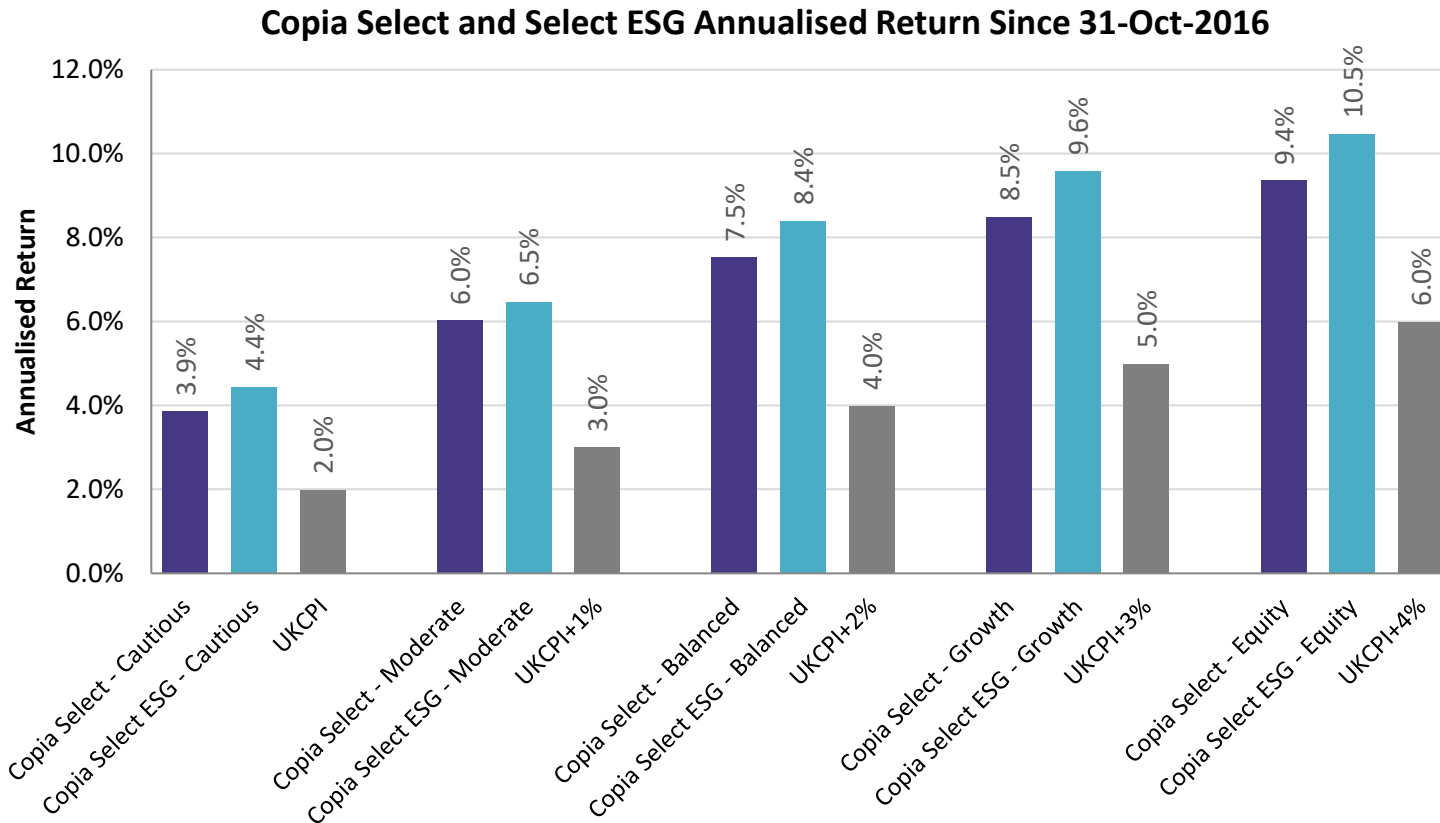
*Available CPI data has been used as a comparator for real returns. CPI data for July 2021 is currently unavailable and not shown.*

***The cumulative returns are calculated based on the period from the inception date of the Select portfolios (31-Oct-2016). The performance figures for Select ESG portfolios include simulated data before the inception date of the Select ESG portfolios (31-Mar-2020)***



# Select and Select ESG: outcome chart

Outcome (annualised return) analysis as of 31 August 2021



*For illustration only.*

*Returns based on Total return, assuming income is re-invested immediately and rebalanced on due dates.*

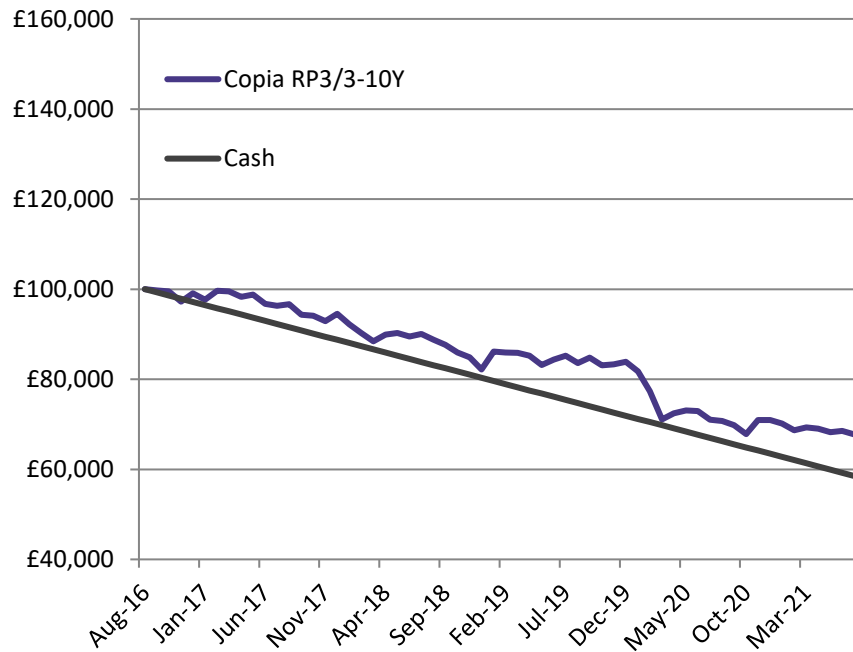
*Available CPI data has been used as a comparator for real returns. CPI data for July 2021 is currently unavailable and not shown.*

***The annualised returns are calculated based on the period from the inception date of the Select portfolios (31-Oct-2016). The performance figures for Select ESG portfolios include simulated data before the inception date of the Select ESG portfolios (31-Mar-2020)***

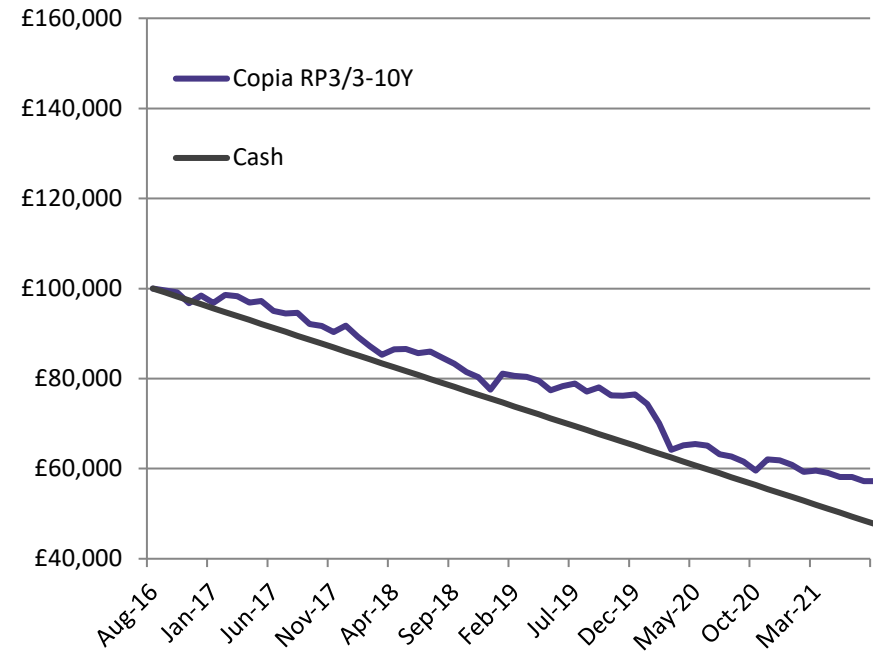
# Retirement Income: outcome chart

Outcome analysis as of 31 August 2021

**Safe Withdrawal Rate (95% Confidence): 8.43%**



**Withdrawal Rate (50% Confidence): 10.48%**

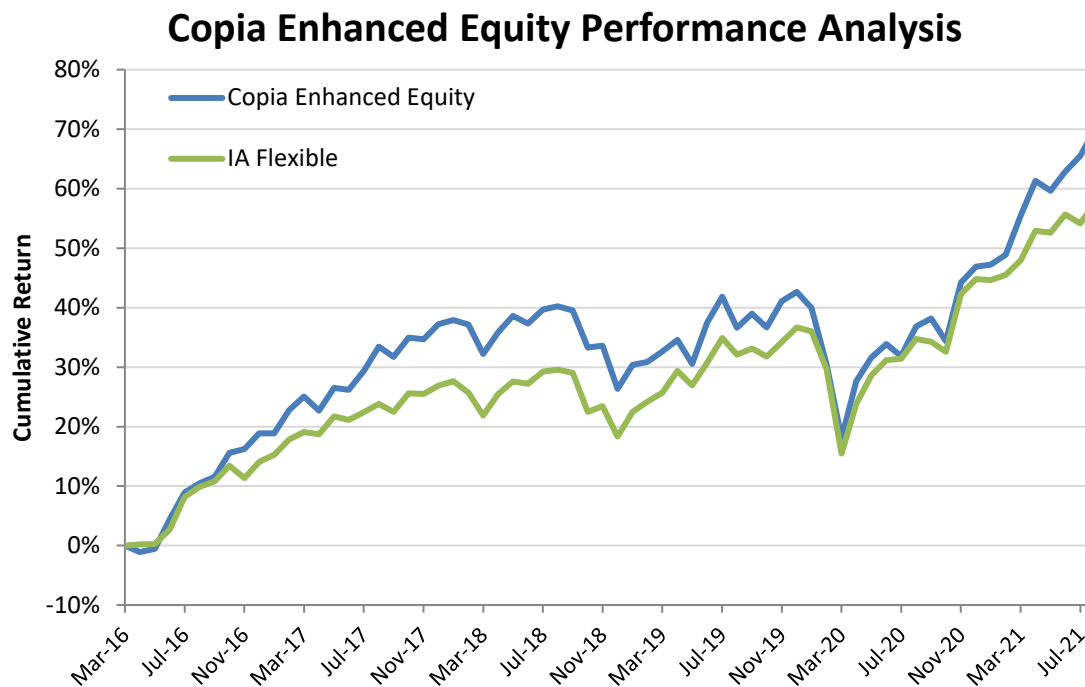


*For illustration only.*

*Returns based on Total return, assuming income is re-invested immediately and rebalanced on due dates.*

**Performance includes simulated performance for data prior to launch date (28-Feb-2017). Actual data is used from 1-Mar-2017 to Present**

Outcome analysis as of 31 August 2021



*For illustration only.*

*Returns based on Total return, assuming income is re-invested immediately and rebalanced on due dates.*



# Copia Capital Management

## The art of portfolio construction

### Disclaimer

Some figures and numbers in this document are based on Copia's simulation data. Figures relating to simulated performance is not a reliable indicator of the future. Models are prepared in accordance with tolerance to risk and not client circumstances and information is from given sources and taken to be reliable and accurate, which Copia cannot warrant for accuracy or completeness.

This document is intended to provide information for professional Advisers only and is not intended for onward transmission to clients. Copia does not provide advice – Advisers must seek their own compliance/legal advice before relying on the information provided in this document. Copia is a trading name of Novia Financial plc. Novia Financial plc is a limited company registered in England & Wales. Register Number: 06467886. Registered office: Cambridge House, Henry Street, Bath, Somerset, BA1 1JS. Novia Financial plc. is authorised and regulated by the Financial Conduct Authority. Register Number: 481600

© Copia Capital Management All Rights Reserved.